

Redistricting & Legislative Update 2021

Presented By:

David Mendez, Partner

Bickerstaff Heath Delgado Acosta LLP

2021 Texas Urban
County Conference



Bickerstaff
Heath Delgado Acosta LLP

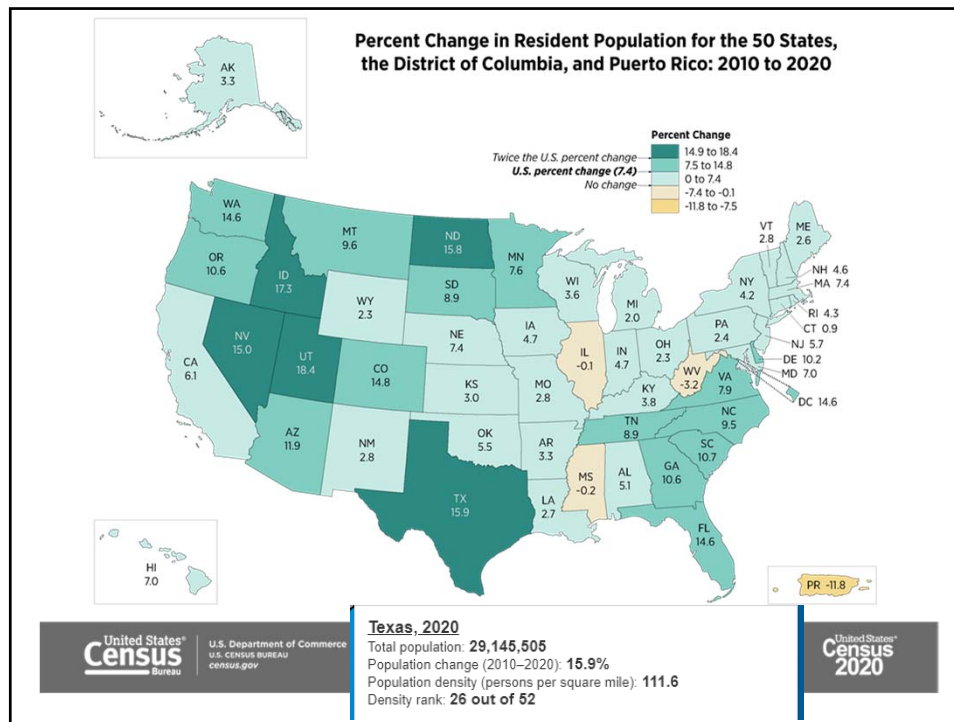
All images from Bing/Creative Commons
©2021 Bickerstaff Heath Delgado Acosta LLP

1

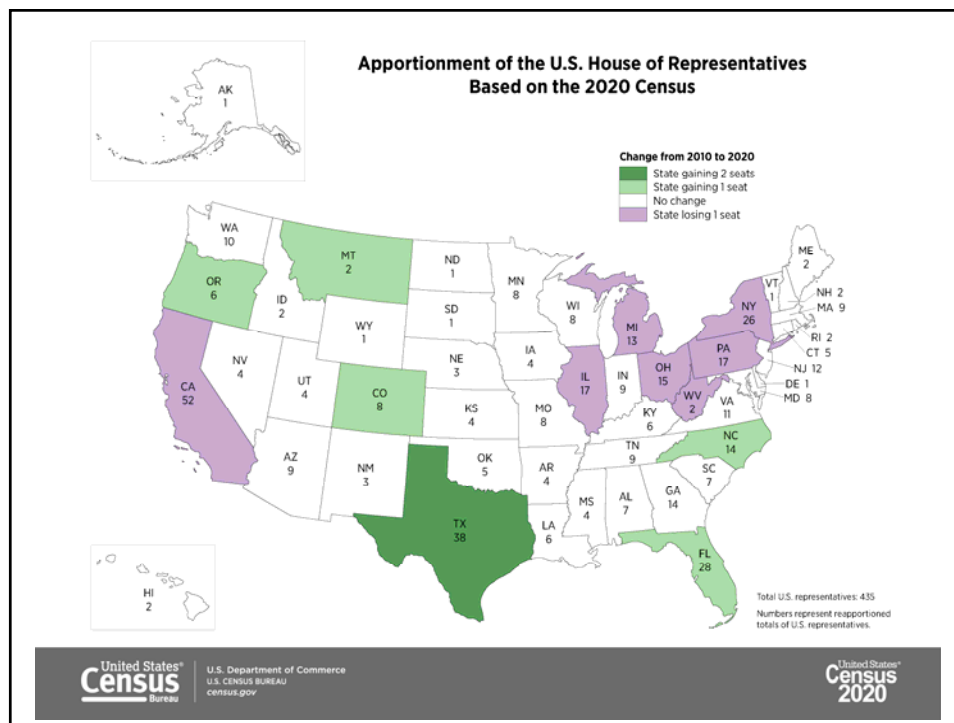
Reapportionment



2



3

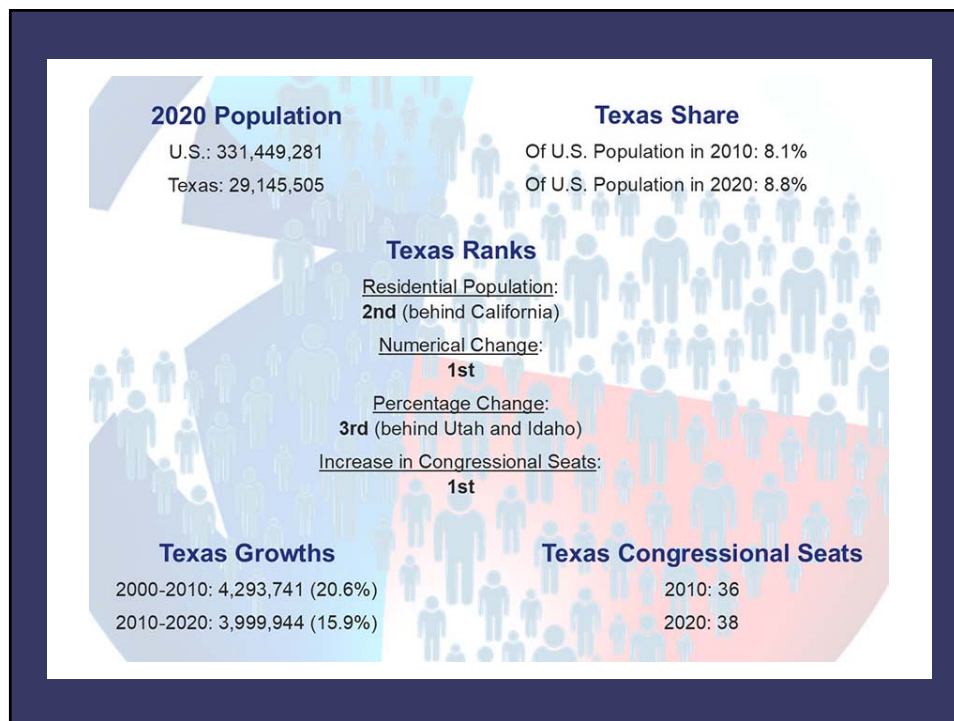


4

Population Growth and Congressional Seat Change					
	2010 Population	2020 Population	Numeric Change 2010-2020	Percent Change 2010-2020	Congressional Seat Change
United States	308,745,538	331,449,281	22,703,743	7.4%	
Texas	25,145,561	29,145,505	3,999,944	15.90%	2
Florida	18,801,310	21,538,187	2,736,877	14.60%	1
North Carolina	9,535,483	10,439,388	903,905	9.50%	1
Colorado	5,029,196	5,773,714	744,518	14.80%	1
Oregon	3,831,074	4,237,256	406,182	10.60%	1
Montana	989,415	1,084,225	94,810	9.60%	1
California	37,253,956	39,538,223	2,284,267	6.10%	-1
New York	19,378,102	20,201,249	823,147	4.20%	-1
Pennsylvania	12,702,379	13,002,700	300,321	2.40%	-1
Ohio	11,536,504	11,799,448	262,944	2.30%	-1
Michigan	9,883,640	10,077,331	193,691	2.00%	-1
Illinois	12,830,632	12,812,508	-18,124	-0.10%	-1
West Virginia	1,852,994	1,793,716	-59,278	-3.20%	-1

Source: U.S. Census Bureau. 2010 and 2020 Census Count
Texas Demographic Center Presentation on May 1, 2021.

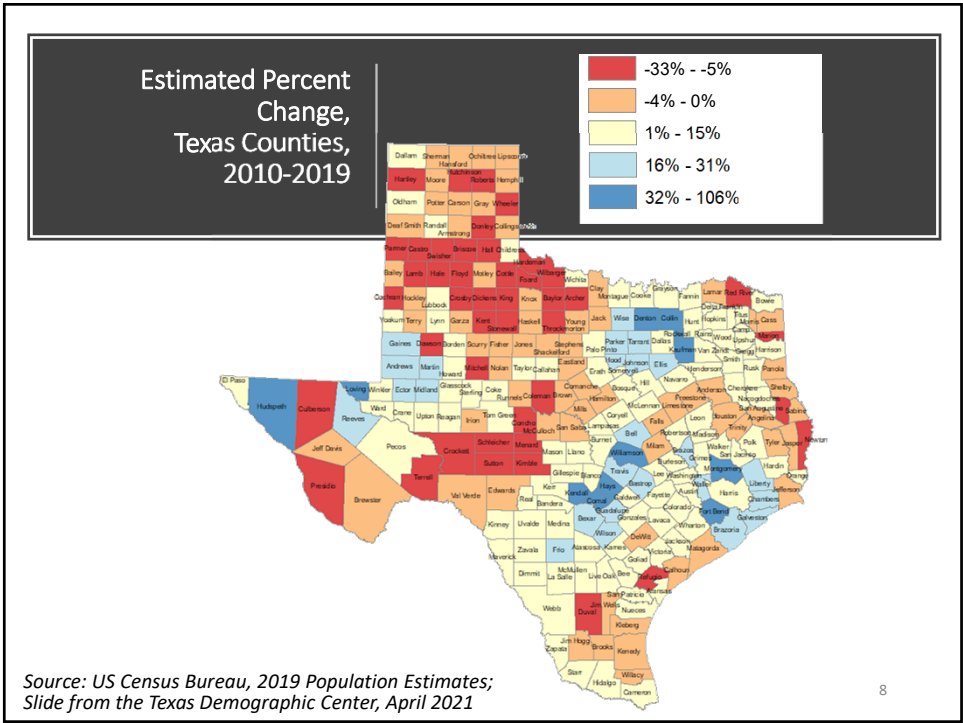
5



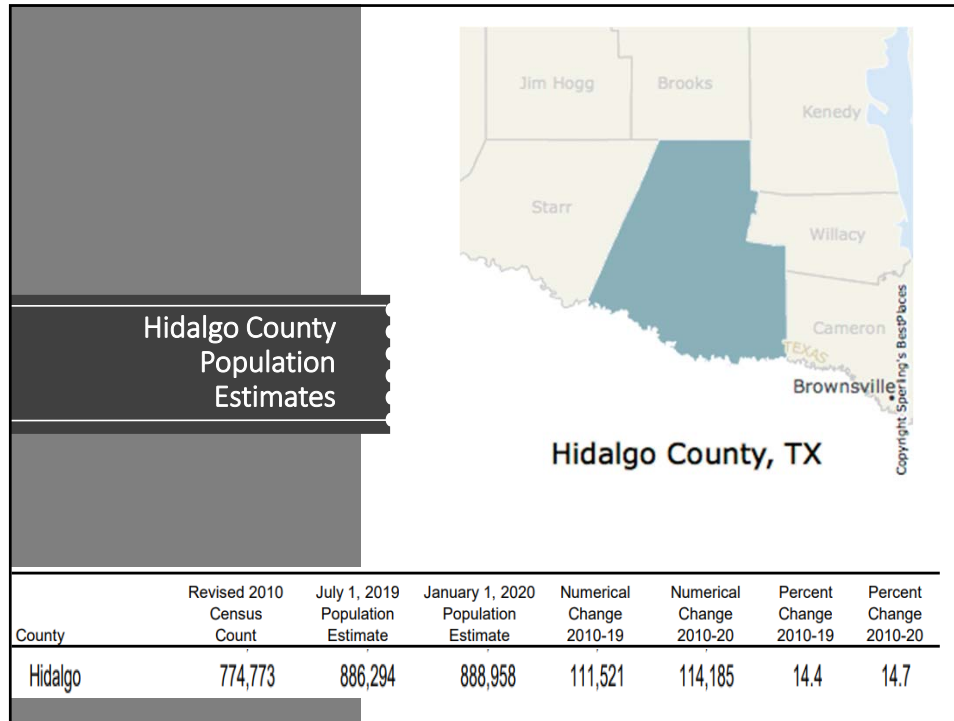
6



7



8



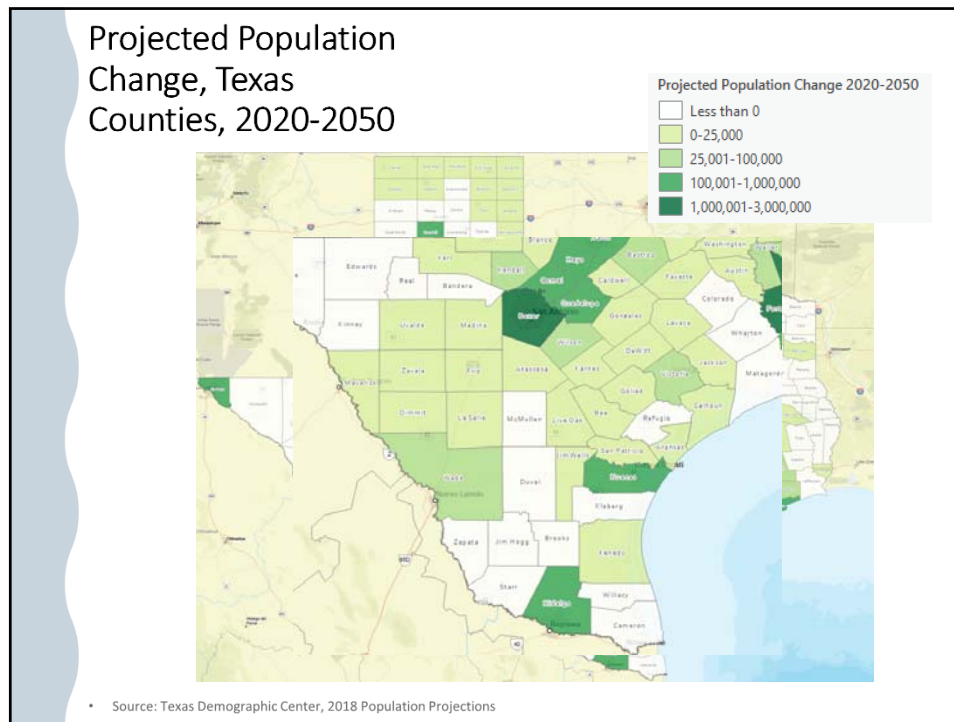
9

Q Hidalgo County

ANNUAL ESTIMATES OF THE RESIDENT POPULATION: APRIL 1, 2010 TO JULY 1, 2019
 Survey/Program: Population Estimates
 TableID: PEPANNRES

Geographic Area Name	Date Description	Population
Hidalgo County, Texas	4/1/2010 Census population	774,769
Hidalgo County, Texas	4/1/2010 population estimates...	774,764
Hidalgo County, Texas	7/1/2010 population estimate	779,149
Hidalgo County, Texas	7/1/2011 population estimate	795,517
Hidalgo County, Texas	7/1/2012 population estimate	808,334
Hidalgo County, Texas	7/1/2013 population estimate	818,619
Hidalgo County, Texas	7/1/2014 population estimate	829,819
Hidalgo County, Texas	7/1/2015 population estimate	839,667
Hidalgo County, Texas	7/1/2016 population estimate	848,960
Hidalgo County, Texas	7/1/2017 population estimate	856,249
Hidalgo County, Texas	7/1/2018 population estimate	862,298
Hidalgo County, Texas	7/1/2019 population estimate	868,707

10



11

Population Estimates for Cities in Hidalgo County

Place	Census 2010	July 1, 2019 Population Estimate	January 1, 2020 Population Estimate	Numerical Change 2010_2019	Numerical Change 2010_2020	Percent Change 2010- 2019	Percent Change 2010- 2020
Abram CDP	2,067	2,461	2,475	394	408	19.1	19.7
Alamo	18,353	20,208	20,274	1,855	1,921	10.1	10.5
Alton	12,298	17,165	17,488	4,867	5,190	39.6	42.2
Donna	15,798	17,235	17,195	1,437	1,397	9.1	8.8
Edcouch	3,161	3,368	3,370	207	209	6.5	6.6
Edinburg	74,569	99,454	101,472	24,885	26,903	33.4	36.1
Elsa	5,660	7,174	7,151	1,514	1,491	26.7	26.3
Hidalgo	11,195	13,984	14,060	2,789	2,865	24.9	25.6
La Joya	3,980	4,409	4,424	429	444	10.8	11.2
McAllen	129,872	144,785	145,138	14,913	15,266	11.5	11.8
Mercedes	15,570	17,096	17,112	1,526	1,542	9.8	9.9
Mission	77,049	86,214	86,474	9,165	9,425	11.9	12.2
Pharr	70,400	81,473	81,671	11,073	11,271	15.7	16
Progreso	5,507	6,073	6,077	566	570	10.3	10.4
Progreso Lakes	240	268	268	28	28	11.7	11.7
San Juan (Hidalgo)	33,856	38,033	38,139	4,177	4,283	12.3	12.7
Sullivan City	3,998	4,273	4,281	275	283	6.9	7.1
Weslaco	35,670	42,047	42,624	6,377	6,954	17.9	19.5

Texas Demographic Center Data 12

12



Next Steps

- Draw the new congressional districts
- Re-balance the existing state representative, state senate and state board of education districts
- Issues raised on redrawing state appellate court “districts”
- Pending legislation that addresses the delay in release of the census data.

13

Effect of Census Data Delay

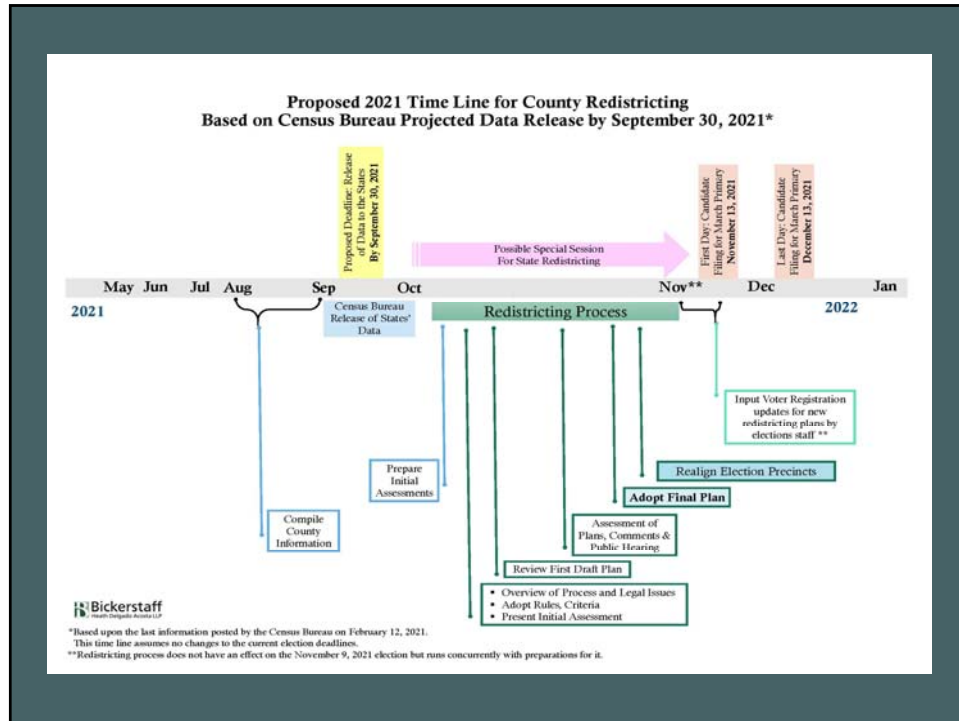
Delay of release of the block-level data (PL 94-171) until “before September 30” will mean we cannot begin drawing districts until after that time

It will mean that jurisdictions with November 2021 elections will not be able to redistrict before that election

It will delay legislative redistricting until after a special session, which will likely delay the creation of election precincts by counties

It may result in a delay in the primary elections, usually held in March (some bills already introduced)

14



15



16

The Census and Redistricting Affects All Cities

Cities with single-member districts will likely have to redistrict to maintain population balance among the districts

Even those cities that do not have single-member council districts and do not redistrict themselves will be affected by congressional, legislative, and county redistricting

The population reported by the census often **governs the distribution of federal dollars**



17

How to Redistrict - Steps

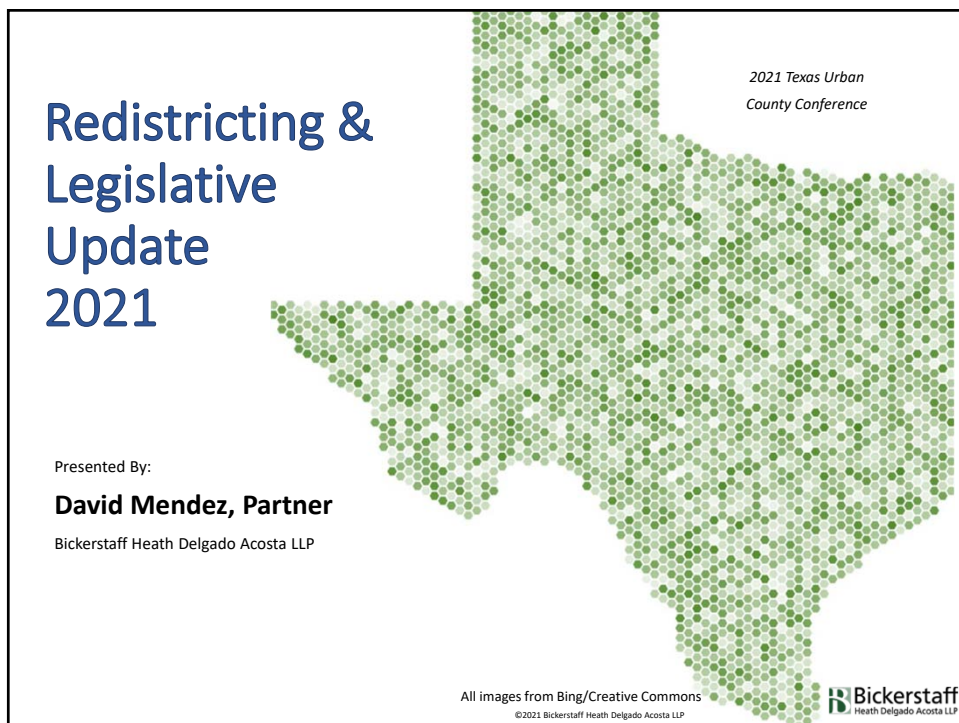
- Preparation of Local Data
- Initial Assessment
- Establishing Policies and Guidelines
- Traditional Districting Criteria
- Rebalancing to correct the population imbalance
- Develop Redistricting Plan(s)
- Present Illustrative Plans
- Public Participation
- Adopt New Plan



18



19



20